

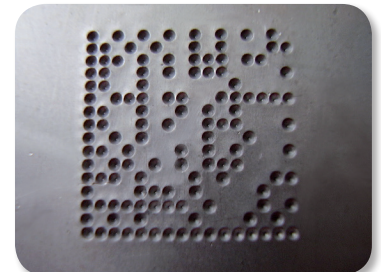
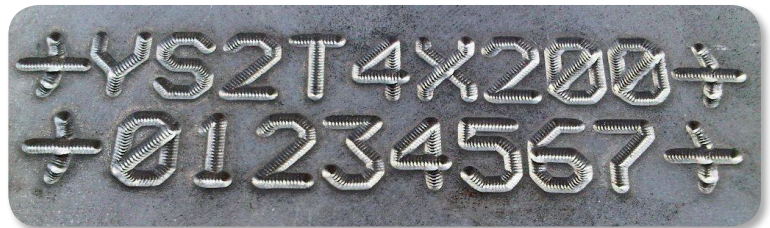
# i113D Deep Marking System



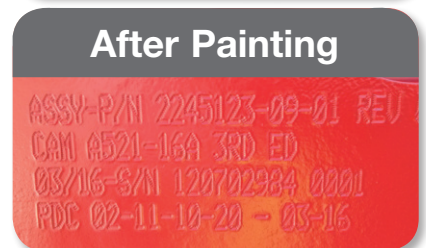
## Advantages of the i113D marking head:

- Deep marking (up to 0.8 mm on standard steel)
- Powerful motors and reinforced mechanics
- Quick marking: controlled by e10 software
- Easy integration
- Quick and simplified preventive maintenance
- Specific stylus dedicated to deep marking

## MARKING EXAMPLES



## MARKING BEFORE AND AFTER PAINTING (OR GALVANIZING)



## TECHNICAL FEATURES

	<b>i113D</b>
Marking Window	110 x 60 mm
Weight	17.5 kg
Controller Connecting Cable	5 m (Optional 10 or 15 m)
Stylus	Tungsten carbide of diameter 6 dedicated to deep marking
Maximum Working Pressure	6 bars

## E10R CONTROLLER



■ Color screen



■ Front USB port



■ Multiple connectivity

- Color screen
- USB port: fast and easy transfer of marking files
- Connectivity: current standard communications
- Fully programmable
- Stand-alone operation (no PC required)
- Reduced size for easy integration (D x W x H): 112 x 380 x 222 mm
- Connection reversibility: cable outlet on top or bottom
- Mounting on DIN rail (optional) for vertical mounting in a control cabinet
- Wide range of marking options (DataMatrix, circular, alphanumeric, logos ...)
- Industrial membrane keyboard
- Fully enclosed controller IP40: no opening or fans
- 100% compatible with older generation machines
- Communication cards (optional)
- 3<sup>rd</sup> / 4<sup>th</sup> axis cards (optional)

## APPLICATIONS



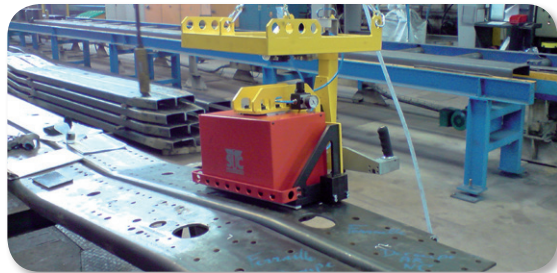
■ Deep marking on beams / tubes / chassis



■ Oil & Gas Sector



■ Deep marking on metal frames



■ Automotive / Truck / Public Works Sector



**SIC MARKING**  
ZAC Bel-Air  
195 Rue des Vergers  
69480 Pommiers - France  
Tél. : +33 (0)4 72 54 80 00  
Fax : +33 (0)4 78 47 39 40  
[www.sic-marking.com](http://www.sic-marking.com)  
[info@sic-marking.com](mailto:info@sic-marking.com)

