

# DOT PEEN MARKING MACHINE e10 i143



**LARGE FORMAT MARKING**  
150 x 100 mm - 5.9 x 3.9 in



**+ FAST MARKING ON ALL TYPES OF SURFACES**

- High-performance mechanics
- Powerful controller

**+ ROBUST AND RELIABLE**

- Stainless steel bellows
- Design for intensive use in industrial environments

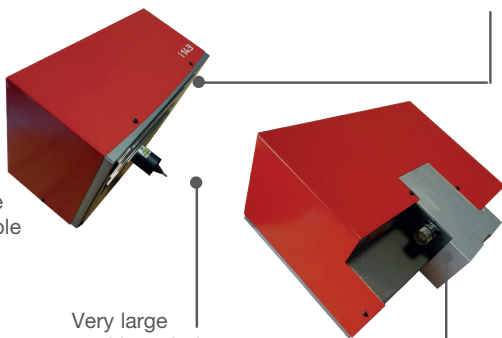
**+ LOW ACQUISITION COST**

- Few consumable

## E10 I143 CHARACTERISTICS

Stainless steel bellows

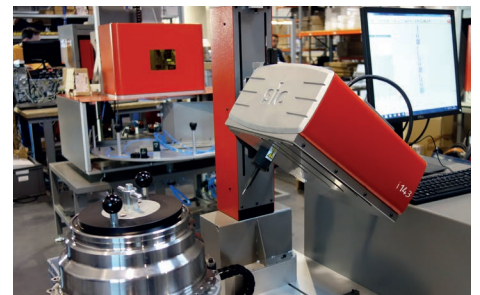
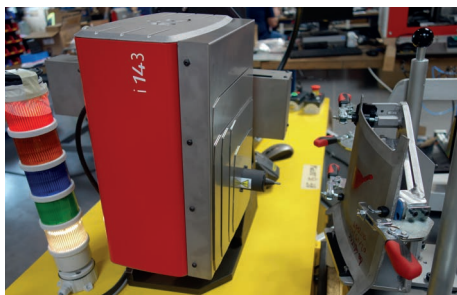
**+ Removable robotic cable**



Very large marking window

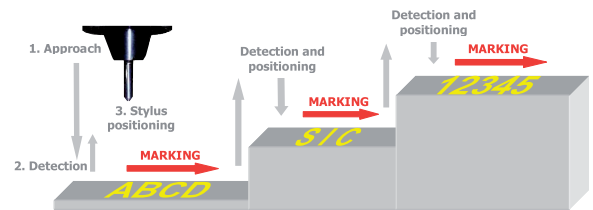
Positioning the recessed connector for added security

## APPLICATIONS



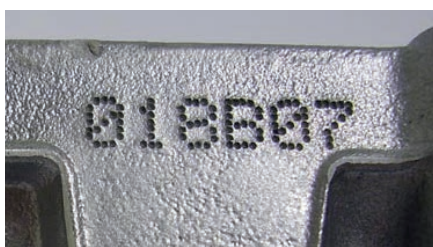
## E10 I143 A CONFIGURATION (i143 + autosensing option)

(i143 + autosensing option)



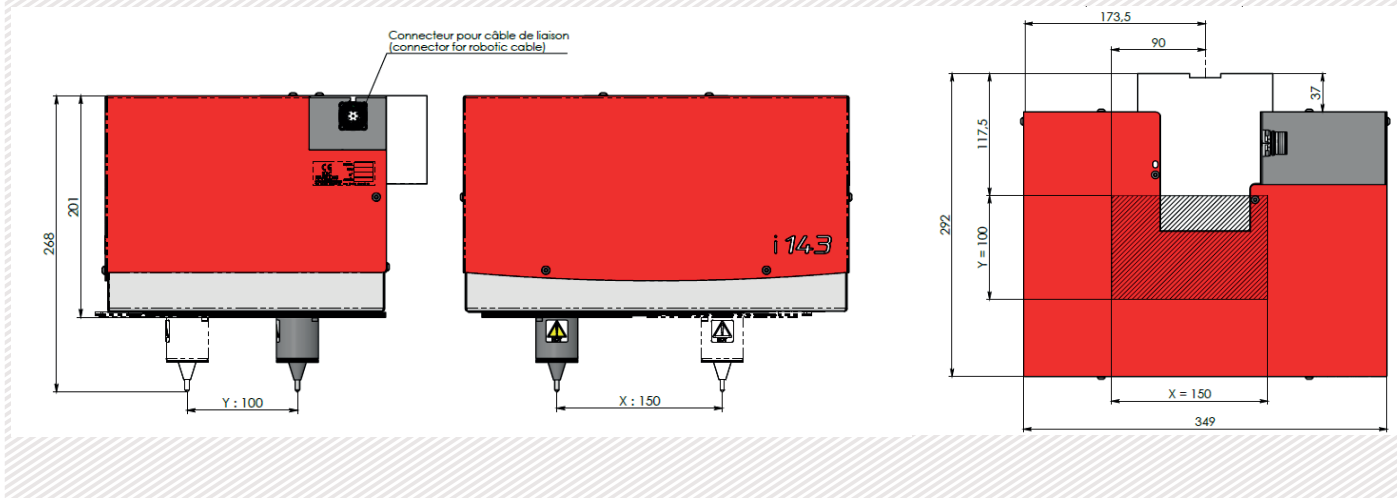
- Repeatability
- Automatic surface detection
- + Autosensing system for high quality and reliable marking over time**
- Associated with a z axis

## DOT PEEN MARKING EXAMPLES



# TECHNICAL & MECHANICAL FEATURES

e10 i143	
Marking window	150 x 100 mm - 5.9 x 3.9 in
External dimensions	349 x 292 x 268 mm - 13.7 x 11.5 x 10.5
Weight	12 kg - 26.4 lbs
Stylus	Tungsten carbide 60 mm - 2.4 in (80 mm - 3.1 in optional)
Cable de Machine / controller cable length	5 m - 16.4 ft (10 or 15 m - 32.8 or 49.2 ft optional)



# OPTIONS



Axe Z Ig 50 à 250 mm



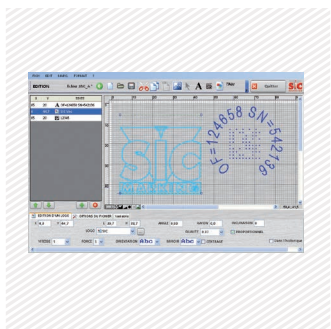
DIN rail kit for e10R controller



Wide range of stylus



Maintenance kit



PC software



Datamatrix reader 2D & 1D



Wireless barcode reader

Please consult us if a specific configuration is not published in the table attached. SIC Marking designs customized and turnkey solutions for all industrial sectors. Our design offices produce machines in compliance with your specifications and your industrial standards.

# E10 CONTROL UNIT

## The e10 controller

- Color screen
- USB Port: to easily upload / download your marking files
- Fully programmable
- Standalone (no PC needed)
- Membrane protected industrial Keyboard
- IP40 waterproof box (no opening or fan)



+ Color screen

+ USB Port

+ Multiple connectivities



+ PC software and utilities



## Technical & electronic features

e10 Controller	
Dimensions	322 x 380 x 112 mm - 13.7 x 15 x 4.4 in
Weight	5 kg - 11lbs
LCD screen resolution	480 x 272 pixels
Keyboard	Qwerty integrated, protected by membrane
Power	300 Watt
Power supply	Single phase, 85 to 260 VAC, 50 to 60 Hz
Controlled axes	2 (optional 3rd / 4th axis card)
Operating temperature	From 5 to 40°C

Communication	
Communication ports	RS232, RS422, USB, RS485 Profibus, TCP/IP, Ethernet/IP
Inputs-outputs	8/8
External keyboard input	USB
PC software	Creation of marking files, transfer controller / PC or USB key

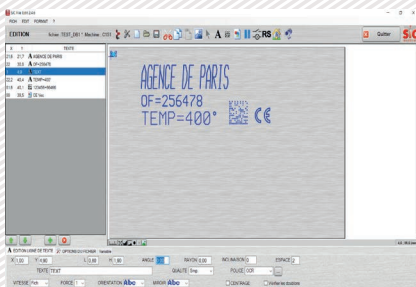
Optional communication cards:

Ethernet TCP



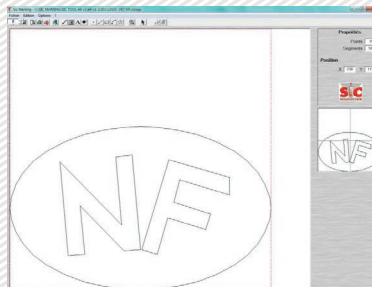
## PC UTILITIES

### File editor



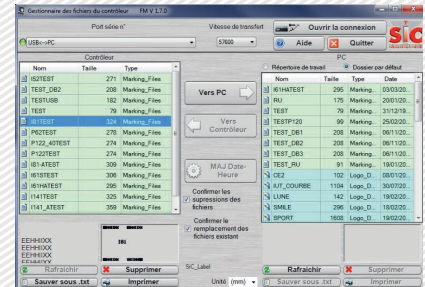
+ Creation or modification of files on PC.

### Creation of logos



+ Creation of vector and matrix logos.

### Creation of logos

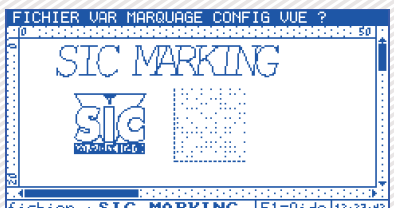


+ Backup and file transfer utility.


# E10 RANGE SOFTWARE

## Software features

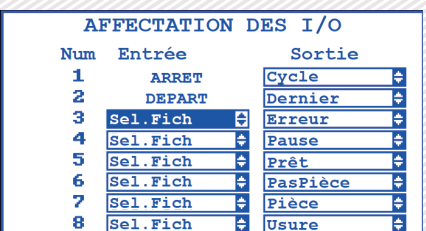
Text function	Incrementation, date codes
Logos	Download from a PC or USB key
Datamatrix	Up to 348 characters, 48 x 48 dots
Fonts	Arial, Comic, Comic_B, Courier, OCR, OCR_BOLD, OCRA, 4x6
Style	Angular, Radial, Inverse, and Mirror
Character Size	From 0,1 mm to 99 mm (limited following marking window)
Depth	Up to 0,3 mm (according to the material)
Resolution Between Dots	0,05 mm MAX
Password	2 security levels
History function	Exportable Excel file
Help with maintenance	Auto diagnosis
Available languages	17



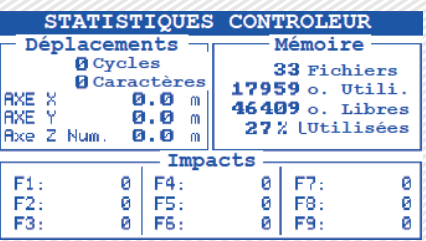
**Graphic view**



**Edit menu**



Num	Entrée	Sortie
1	ARRET	Cycle
2	DEPART	Dernier
3	Sel. Fich	Erreur
4	Sel. Fich	Pause
5	Sel. Fich	Prêt
6	Sel. Fich	PasPièce
7	Sel. Fich	Pièce
8	Sel. Fich	Usure



**STATISTIQUES CONTROLEUR**

Déplacements: 0 Cycles, 0 Caractères

Mémoire: 33 Fichiers, 17959 o. Utili., 46409 o. Libres, 27% Utilisées

Impacts:

F1:	0	F4:	0	F7:	0
F2:	0	F5:	0	F8:	0
F3:	0	F6:	0	F9:	0

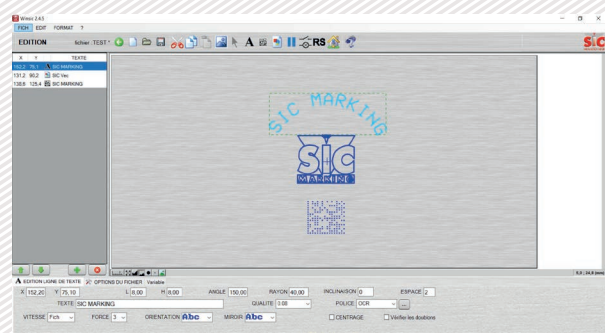
PC software for directly controlling the marking machine.

Available functions:

- Editing of marking files
- Input / output management
- History function and anti duplicates
- Datamatrix ECC200 and UID
- ...

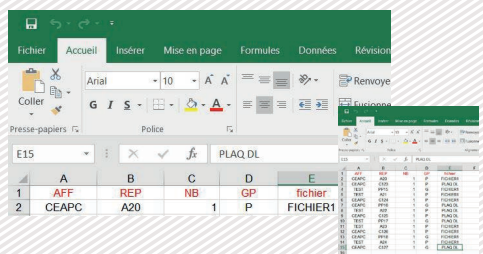
## OPTIONAL WINSIC SOFTWARE

WINSIC is a PC software for direct control of the marking machine.



**+ Built-in logo design utility**

**+ Database Management (Excel, Access, txt)**



**+ Insertion of background images**

